

PROFITHERM INCREASED PROFITABILITY

Simplified solution for metal processing industry



PROFITHERM

MULTIPLE COMBINATIONS FOR THERMAL CUTTING NEEDS

CNC controller designed to improve operator efficiency.

- Easy operation
- Interactive workspace
- Rugged industrial design



AC servo motors with rigid gear mounting and quality pinions for precise machine movements and uninterrupted operation.

Machined rails for precise and smooth motion

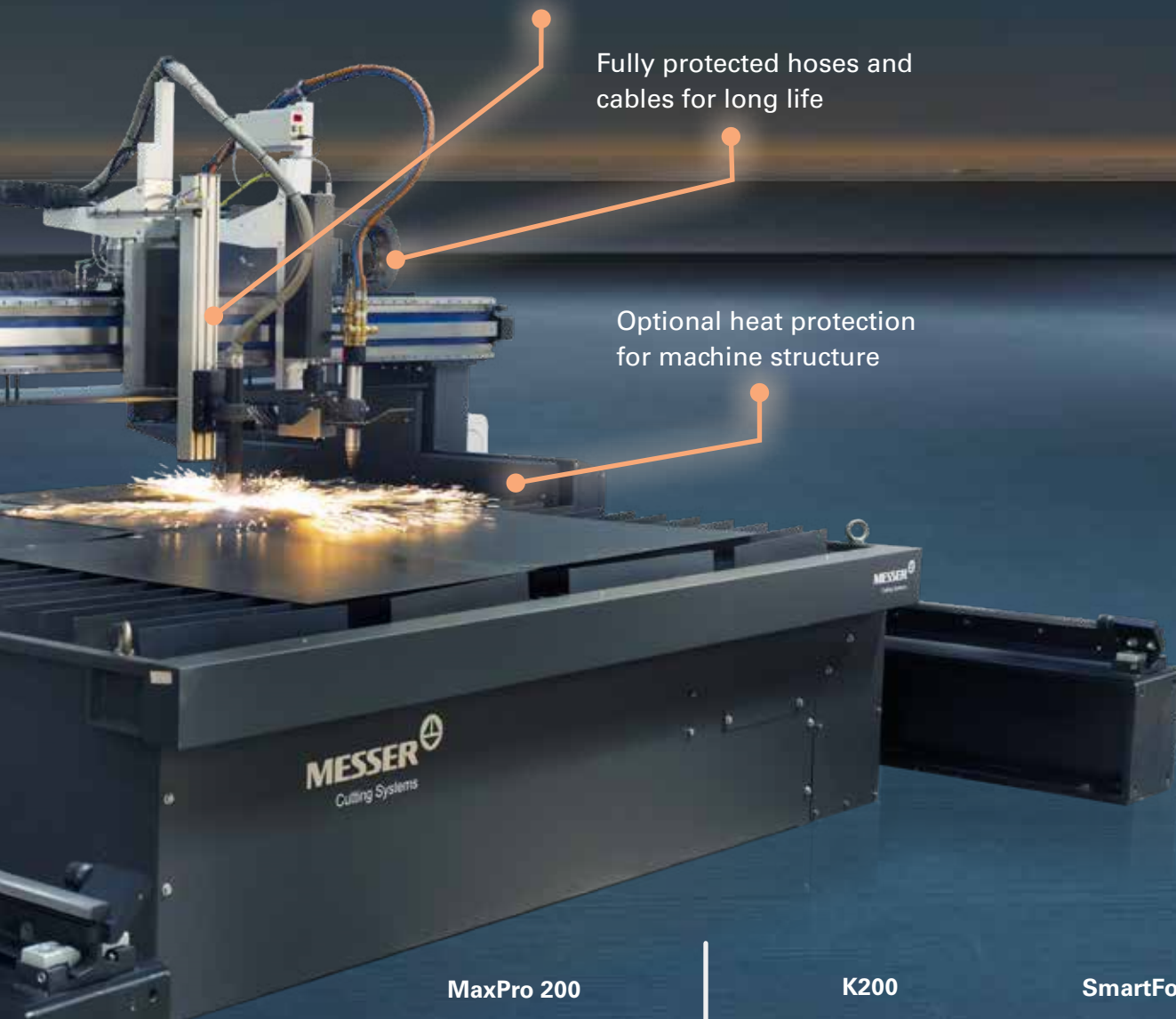
For over 120 years we have provided quality products and reliable services for the metal processing industry.
ProfiTherm is a flexible processing machine that can be tailored to fit your unique application.

Combination of cutting technology (Oxyfuel & Plasma)
for higher productivity (up to 4 torches)

- ALFA
- MS932
- Air / Oxygen Plasma / HD Plasma

Fully protected hoses and cables for long life

Optional heat protection for machine structure



MaxPro 200



HYPERTHERM

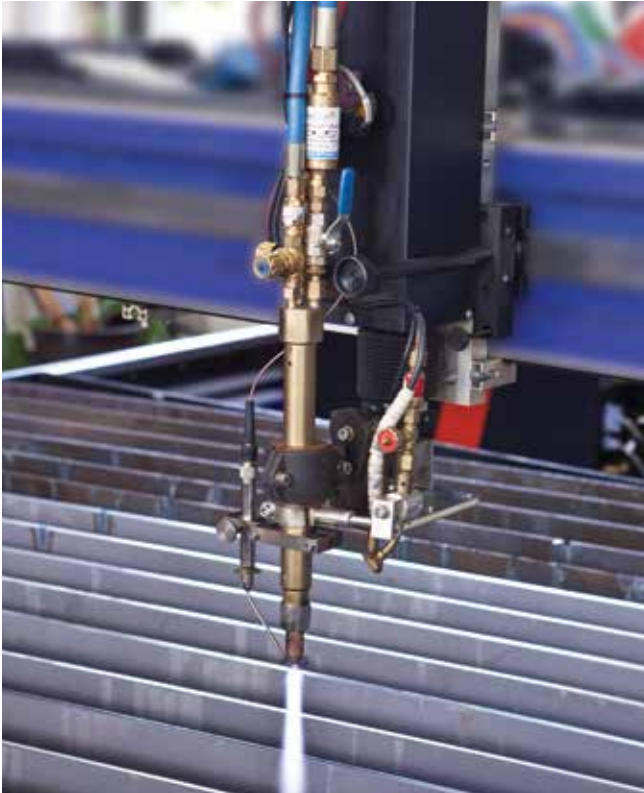
K200



KJELLBERG

SmartFocus 200





PROCESS OPTIONS

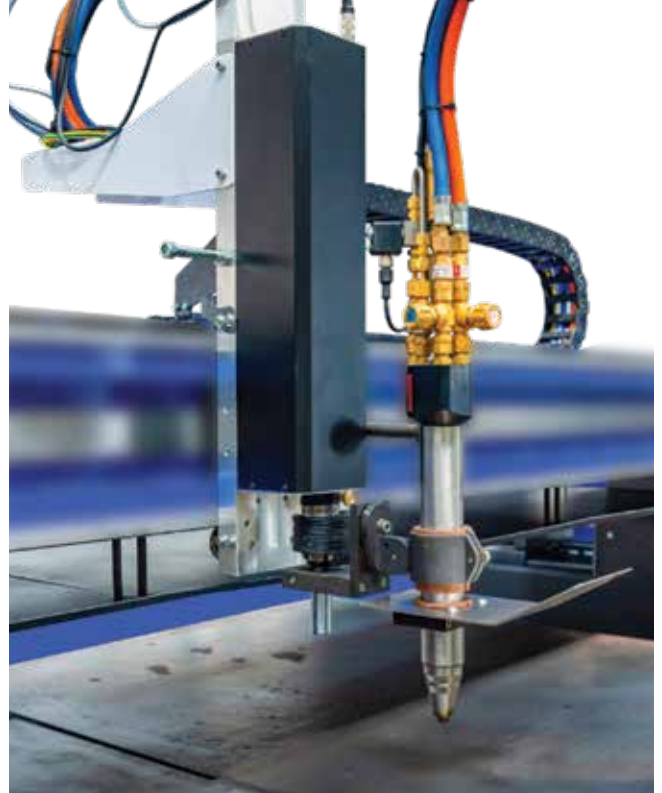
Oxyfuel - MS932

The MS932 torch patented quick-change system enables cutting nozzles and heating cap released manually without tools.

Higher nozzle life.

Unitary heating cap for all fuel gases.

Maintenance free torch considerably reduces downtime and operating cost.



PROCESS OPTIONS

Oxyfuel – ALFA

The patented ALFA torch contributes to the low operating costs by reducing setup and process monitoring time.

Inbuilt ignition eliminates manual strikers.

Consumables can be changed without tools.

Inbuilt height sensing quickly positions torch at the optimum cut height to substantially reduce piercing time.

Integrated collision protection allows the torch to cut up to the edge of the plate, thus increasing plate utilization.

PRECISION CUTTING OF
FERROUS MATERIAL

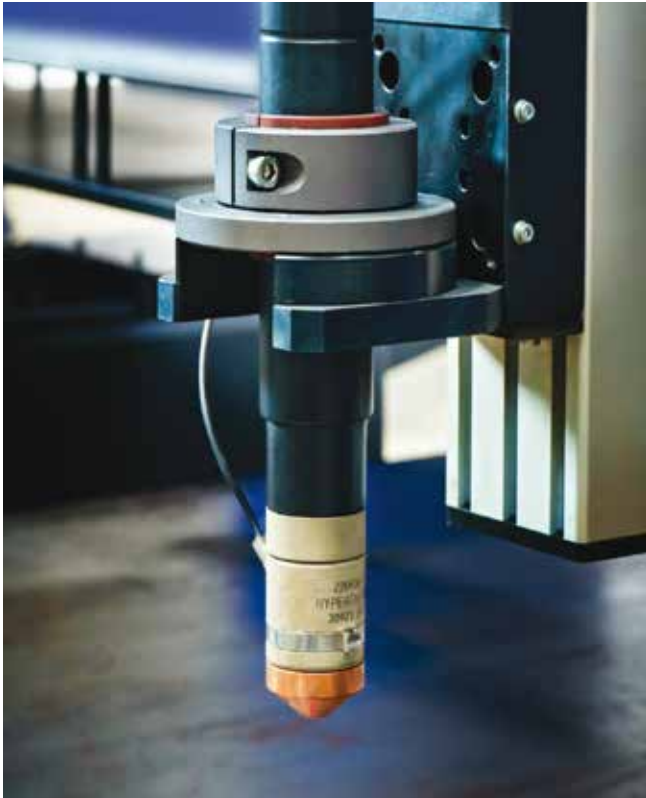


+ Maximum thickness up to
150 mm for carbon steel

PRECISION CUTTING OF
FERROUS MATERIAL



+ Maximum thickness up to
150 mm for carbon steel.



PROCESS OPTIONS

Plasma

The best air and oxygen plasma systems along with collision protection and other process optimizing features provide higher productivity.

Plasma system coupled with well optimized CNC and high response lifter provides clean cut edges and sharp corners.



AIDING OPTIONS

Cutting table

Progres+ cutting tables provide cleaner ambience during thermal cutting process.

Optimised flow extraction duct with large, tight fitting flaps ensure all cutting dust and smoke is extracted while using minimum fan power.

Efficient design of cutting tables ensures high operator safety and high energy efficiency.

With the modular construction, extension of cutting table at later stage is possible.

PRECISION CUTTING OF
FERROUS AND NON-FERROUS
MATERIAL



- + Maximum thickness upto 50mm in mild sheet
- + Maximum thickness upto 20mm in Stainless steel and Aluminium.

EFFECTIVE SMOKE
REMOVAL AND MINIMUM
MAINTENANCE



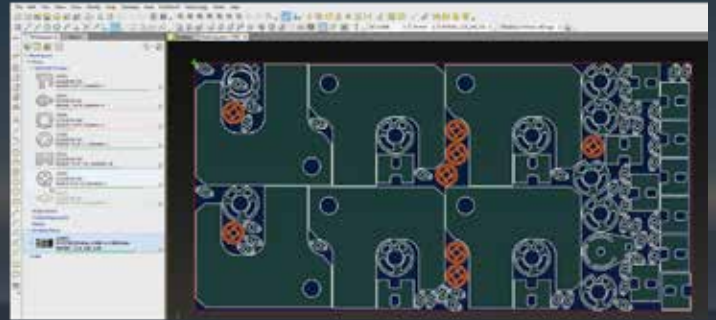
- + Working height 720mm
- + Working widths 2000 & 3000mm
- + Segment length 2000mm



Ideal for work preparation

OmniWin is a powerful, easy to use designing and nesting software that saves time, material and costs. It is the ideal tool for work preparation in oxyfuel, plasma and laser cutting with CNC machines, taking overall cutting tasks for order-based production.

The software is both effective and economical for small productions as well as for just-in-time manufacturing with changing quantities in customer cutting operations.



GLOBAL CONNECT



Easy to use, Feature rich

Compact windows interface touch screen with process database featuring custom shape library, CAD import and true shape nesting

Tough & Rugged aluminium case

Robust components to match industry standards

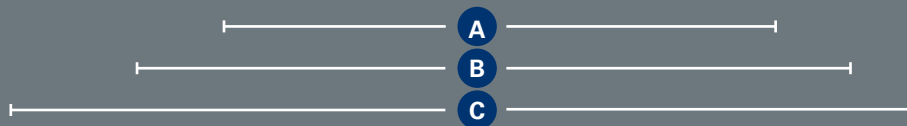
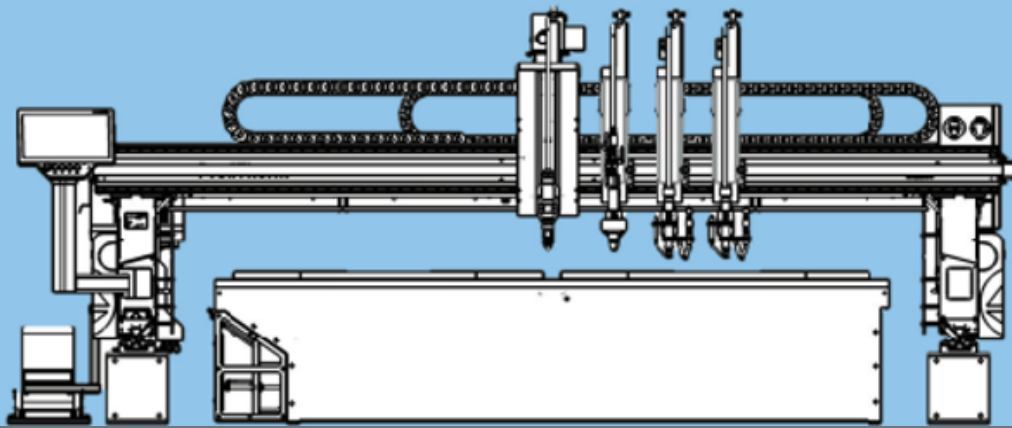
Modern fully network compatible PC-based control unit

Job centric approach for faster operation

User centric operational interface

Virtual Service puts service experts one push button away

Easy to learn functions allow operators to become experts in short time



A	Working width*	2000 mm	3000 mm
B	Track gauge	3100 mm	4000 mm
C	Overall width	4070 mm	5070 mm

* Considering single torch. Working width will vary based on the number of torches.

Standard features

- + Cutting widths 2000 mm & 3000 mm
- + Positioning speed X & Y axis: 12 m/min
- + Torch stroke: 200 mm
- + Longitudinal axis dual drive
- + Global control system, based on Windows, easy-to-use operation interface

Optional features

- + Cutting table
- + Manual band clamping for multiple torches
- + Heat shield for machine structure
- + Strip cutting
- + Swivelling torch head
- + Virtual service remote consultation and diagnosis



CREATING SOLUTIONS BEYOND MACHINES

What we stand for

PRODUCT

Messer Cutting Systems is a global supplier of cutting edge technology for the metalworking industry.

AUTOMATION

With over 900 employees worldwide in over 50 countries, we maintain a constant dialogue with our customers to achieve sustainable user-oriented innovation.

DIGITAL

SERVICES

Our portfolio embraces the themes PRODUCT, DIGITAL, SERVICES, AUTOMATION and KNOW-HOW. We will live up to our claim "creating solutions beyond machines" not just with the most modern cutting systems and solutions for oxyfuel technology.

KNOW-HOW

Appropriate services and training, our own software applications as well as the integration of solutions from our technology partners, e. g. in the field of automation, complete the machine to give forward-looking total solutions.

Our know-how combined with our customer-oriented attitude and actions have made us the worldwide partner of choice for innovative total solutions on all aspects of cutting systems for over 120 years.

Messer Cutting Systems India Private Limited

No 199/2AB2, 198/2A2A & 198/2A2B
SNMV College Road, Malumichampatti,
Coimbatore - 641 050,
Tamil Nadu, India

Tel : +91 422 6725501

Mail : sales.all@messer-cutting.com

www.messer-cutting.com

